



2008-2009 GMT Quarterly Report for District (or Undistricted) District 13 D



GMT: **STEVEN D SHERER**

Location: **OHIO**

GMT CA: **1 & 2**

CLUBS

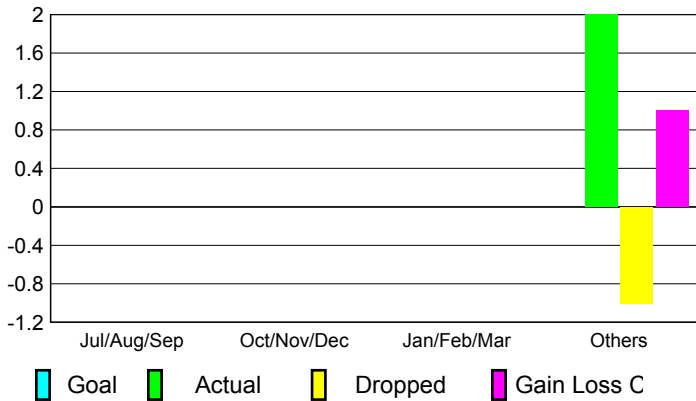
Club Results 2008-2009

Clubs 2007-2008

| Month | New Club Goal | Actual New Clubs | Actual Dropped Clubs | Gain/Loss of Clubs | Gain/Loss of Clubs |
|---------------|---------------|------------------|----------------------|--------------------|--------------------|
| Jul/Aug/Sep | 0 | 0 | 0 | 0 | 1 |
| Oct/Nov/Dec | 0 | 0 | 0 | 0 | 0 |
| Jan/Feb/Mar | 0 | 0 | 0 | 0 | 0 |
| Apr/May/June | 0 | 2 | -1 | 1 | 0 |
| Totals | 0 | 2 | -1 | 1 | 1 |

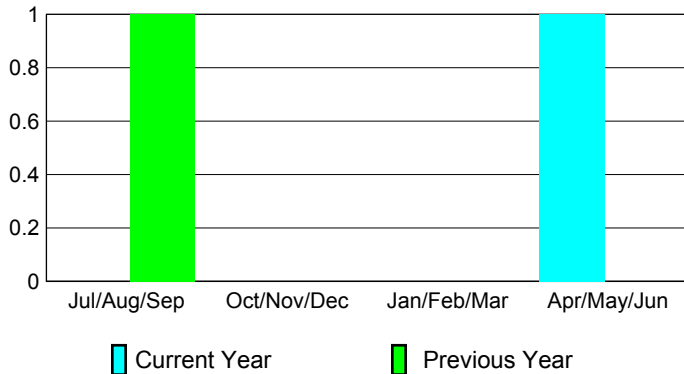
Club Results 2008-2009

Goal, New, Dropped, Gain/Loss



Comparison of Club Gain/Loss

Current Year Compared to the Previous Year



YTD Status Quo Clubs 2008-2009

Status Quo Clubs Compared to Status Quo Members



MEMBERSHIP

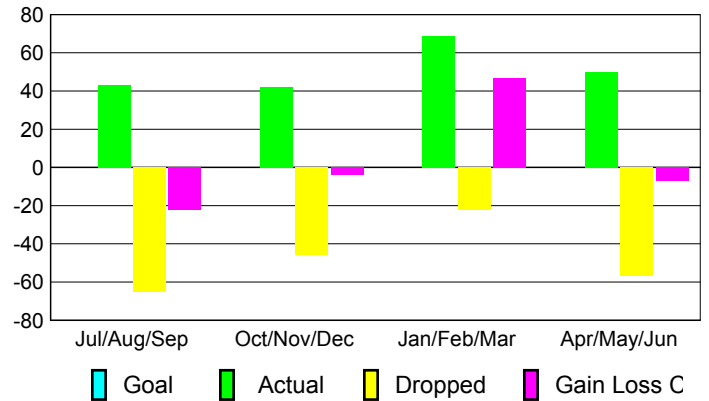
Membership Results 2008-2009

Membership 2007-2008

| Month | Net Memb Goal | Actual New Memb | Actual Dropped Memb | Gain/Loss of Memb | Gain/Loss of Memb |
|---------------|---------------|-----------------|---------------------|-------------------|-------------------|
| Jul/Aug/Sep | 0 | 43 | -65 | -22 | 10 |
| Oct/Nov/Dec | 0 | 42 | -46 | -4 | 2 |
| Jan/Feb/Mar | 0 | 69 | -22 | 47 | -6 |
| Apr/May/June | 0 | 50 | -57 | -7 | -9 |
| Totals | 0 | 204 | -190 | 14 | -3 |

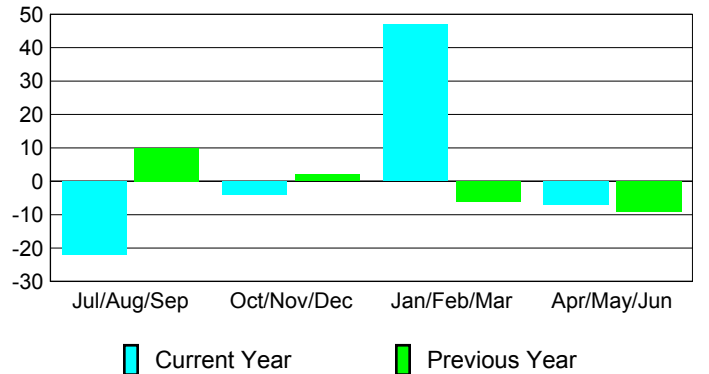
Membership Results 2008-2009

Goal, New, Dropped, Gain/Loss

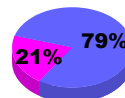


Comparison of Membership Gain/Loss

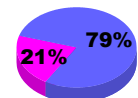
Current Year Compared to the Previous Year



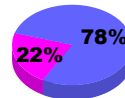
Gender Comparison 2008-2009



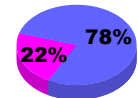
Jul/Aug/Sep



Oct/Nov/Dec



Jan/Feb/Mar



Apr/May/June

Male

Female